

Table des matières

Créer dépôt	3
/etc/inetd.conf	3
Clients PA-RISC	3
Clients Itanium	3
Ajouter un client au serveur Ignite	3
Restauration d'un client	3

Créer dépôt

```
ls -l *.depot |while read i; do package=`echo $i|awk -F"." '{print $1}'`; echo "swcopy -s /var/opt/ignite/depots/patch/java7_Sep08_1131/$i -x enforce_dependencies=FALSE $package @ /var/opt/ignite/depots/patch/java7_Sep08_1131/depot"; done
swreg -l depot /var/opt/ignite/depots/patch/java7_Sep08_1131/depot
```

/etc/inetd.conf

```
[root@opign001 - /opt/ignite/bin ] # egrep "tftp|bootp" /etc/inetd.conf
# Before uncommenting the "tftp" entry below, please make sure
# that you have a "tftp" user in /etc/passwd. If you don't
# have one, please consult the tftpd(1M) manual entry for
tftp dgram udp wait root /usr/sbin/tftpd tftpd /opt/ignite /var/opt/ignite
#bootps dgram udp wait root /usr/sbin/bootpd bootpd
bootps dgram udp wait root /opt/ignite/sbin/instl_bootd instl_bootd
instl_boots dgram udp wait root /opt/ignite/sbin/instl_bootd instl_bootd
```

Clients PA-RISC

```
[root@opign001 - /var/opt/ignite/recovery/archives ] # tail /etc/opt/ignite/instl_boottab
# 15.1.54.125 # IP address usable by any client
# 15.1.54.126:080009123456:19960116132331 # Entry usable by all (used already)
# 15.1.54.127:::reserve # Reserve this entry once used.
# 15.1.54.138:080009123457:::reserve # Reserve an IP-Addr for specific host

# IGNITE_UX_COPYRIGHT 1993 2002 #
# "(C) Copyright 1993-2002 Hewlett-Packard Development Company, L.P." #
# IGNITE_UX_COPYRIGHT #
192.9.254.186:0x001321D6D05D:20160202104228:reserve
192.9.252.211:0x00306E087EBE:20160202093811:reserve
```

Clients Itanium

```
[root@opign001 - /var/opt/ignite/recovery/archives ] # tail /etc/bootptab
#rnsd414-svg:tc=System-IPF-SVG:ip=192.9.253.245:ha=002264E4F480
#tpcun038-svg:tc=System-IPF-SVG:ip=192.9.252.160:ha=00306E465F0F

# Physical server
#tpcun029-svg:tc=System-IPF-SVG2:ip=192.9.250.101:ha=00127943EDC8

# Clarify servers
#opclf001-svg:tc=System-IPF-SVG:ip=192.9.250.103:ha=0025B3B4ACED
#opclf002-svg:tc=System-IPF-SVG:ip=192.9.250.104:ha=0025B3B4AE59
```

Ajouter un client au serveur Ignite

- A partir du client

```
/opt/ignite/bin/add_new_client -s ignite-server
```

Restauration d'un client**Démarrer la bécane et booter sur le lan**

Une fois sur le GSP, breaker, et lancer **bo lan install** :

```
[tpcun071] MP:CM> PC -on

PC -on

System will be powered on.

Confirm? (Y/[N]): Y
-> System is being powered on.
-> Command successful.

[tpcun071] MP:CM>
```

```
MP MAIN MENU:

C0: Console
VFP: Virtual Front Panel
CM: Command Menu
CL: Console Log
SL: Show Event Logs
HE: Main Help Menu

X: Exit Connection
[tpcun071] MP> C0

(Use Ctrl-B to return to MP main menu.)

Main Menu: Enter command or menu >
----- Live Console -----

Firmware Version 45.44

Duplex Console IO Dependent Code (IODC) revision 1
-----
(c) Copyright 1995-2004, Hewlett-Packard Company, All rights reserved
-----

Processor   Speed      State      CoProcessor State  Cache Size
Number                                           State
-----
   0    1000 MHz  Active      Functional      67108864 67108864
   1    1000 MHz  Idle        Functional      67108864 67108864

Central Bus Speed (in MHz) :      200
Available Memory           : 4194304 KB
Good Memory Required       : Not initialized. Defaults to 32 MB.

Primary boot path: 0/1/1/0.0
Alternate boot path: 0/1/1/0.1
Console path: 0/7/1/1.0
Keyboard path: 0/0/4/0.0

Processor is booting from the first available device.

To discontinue, press any key within 10 seconds.

Boot terminated.

----- Main Menu -----

Command      Description
-----
B0ot [PRI|ALT|<path>]  Boot from specified path
P0ath [PRI|ALT] [<path>]  Display or modify a path
SEArch [DIsply|IPL] [<path>]  Search for boot devices

C0nfiguration menu      Displays or sets boot values
I0nformation menu       Displays hardware information
SERvice menu            Displays service commands

DIsply                  Redisplay the current menu
HElp [<menu>|<command>]  Display help for menu or command
RESET                   Restart the system
-----

Main Menu: Enter command or menu > bo lan install

Lancement de l'environnement de recovery

Main Menu: Enter command or menu > bo lan install

Interact with IPL (Y, N, or Cancel)?> n
```

```

Booting...
Boot IO Dependent Code (IODC) revision 4

HARD Booted.

ISL Revision A.00.44 Mar 12, 2003

ISL booting hpux KernelPrompt "Choose an operating system to install that your hardware supports:" 120 1

1. target OS is B.11.11
2. target OS is B.11.23 PA
3. target OS is B.11.31 PA
4. Exit

Choose an operating system to install that your hardware supports:1

Boot

: lan(0/1/2/0;0)/boot/Rel_B.11.11/WINSTALL

12296192 + 2257008 + 2718888 start 0x20c568

alloc_pdc_pages: Relocating PDC from 0xffffffff0c00000 to 0x3e900000.

gate64: sysvec_vaddr = 0xc0002000 for 2 pages
NOTICE: nfs3_link(): File system was registered at index 4.
NOTICE: autofs_link(): File system was registered at index 6.
NOTICE: cacheefs_link(): File system was registered at index 7.
igelan0: INITIALIZING HP PCI 1000Base-T Core at hardware path 0/1/2/0
iether1: INITIALIZING HP AB545-60001 PCI/PCI-X 1000Base-T 4-port 1000B-T Adapter at hardware path 0/4/1/0/4/0
iether2: INITIALIZING HP AB545-60001 PCI/PCI-X 1000Base-T 4-port 1000B-T Adapter at hardware path 0/4/1/0/4/1
iether3: INITIALIZING HP AB545-60001 PCI/PCI-X 1000Base-T 4-port 1000B-T Adapter at hardware path 0/4/1/0/6/0
iether4: INITIALIZING HP AB545-60001 PCI/PCI-X 1000Base-T 4-port 1000B-T Adapter at hardware path 0/4/1/0/6/1

System Console is on the Built-In Serial Interface
Swap device table: (start & size given in 512-byte blocks)

entry 0 - auto-configured on root device; ignored - no room

WARNING: no swap device configured, so dump cannot be defaulted to primary swap.

WARNING: No dump devices are configured. Dump is disabled.

Starting the STREAMS daemons-phase 1

Create STCP device files

Starting the STREAMS daemons-phase 2

$Revision: vmunix: vw: -proj selectors: CUIP80_BL2000_1108 -c 'Vw for CUIP80_BL2000_1108 build' -- cupi80_bl2000_1108 'CUIP80_BL2000_1108' Wed Nov 8 19:24:56 PST 2000 $

Memory Information:

physical page size = 4096 bytes, logical page size = 4096 bytes

Physical: 4192256 Kbytes, lockable: 3193720 Kbytes, available: 3685656 Kbytes

* Preparing to execute init...
===== 02/02/16 05:20:34 EST HP-UX Installation Initialization.
@(#)Ignite-UX Revision C.7.14.274
@(#)ignite/launch (opt) Revision:
/branches/IUX_RA1203/ignite/src@B4460 Last Modified: 2012-02-24
09:31:30 +0530 (Fri, 24 Feb 2012)
* Configuring RAM filesystems...
* Scanning system for IO devices...
WARNING: ioctl: DLKM is not initialized

```

```
* Boot device is: 0/1/2/0
* Setting keyboard language.
```

Lancement de l'installation

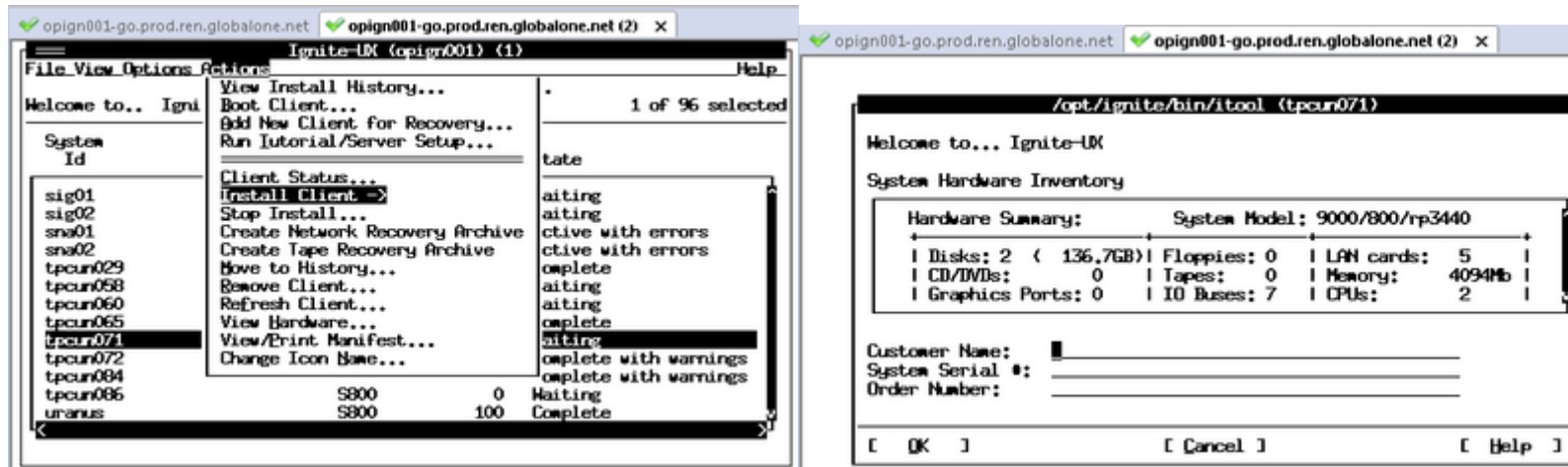
```
Welcome to Ignite-UX! Use the <tab> key to navigate between fields, and the arrow keys
within fields. Use the <return/enter> key to select an item.
Use the <return/enter> or <space-bar> to pop-up a choices list. If the
menus are not clear, select the "Help" item for more information. Hardware Summary: System Model: 9000/800/rp3440
+-----+-----+
| Disks: 2 ( 136.7GB) | Floppies: 0 | LAN cards: 5 |
| CD/DVDs: 0 | Tapes: 0 | Memory: 4094Mb |
| Graphics Ports: 0 | IO Buses: 7 | CPUs: 2 | | [ H/W Details ]
+-----+-----+
[ Install HP-UX ]
[ Run an Expert Recovery Shell ]
[ Advanced Options ]
[ Reboot ]
[ Help ]
User Interface Options:
[ ] Advanced Installation (recommended for disk and filesystem management)
[ ] No user interface - setup basic networking, use defaults and go
[ * ] Remote graphical interface running on the Ignite-UX server

* Bringing up Network (lan0)
add net default: gateway 192.9.255.254
* Reading configuration information from server...
* NFS mounting clients directory.
* Using client directory: /var/opt/ignite/clients/0x001321D6D05D

Ignite-UX Waiting for installation instructions from server: 192.9.254.116 Icon Name Shown in GUI: tpcun071
Active System Name/IP: tpcun071-svg/192.9.254.186 You may now complete the installation using the "ignite" graphical
interface on the Ignite-UX server (See ignite(1M)). If you are not
already running "/opt/ignite/bin/ignite" on the server, do so now.
No further action is required at this console.
```

Suivi de la restore via le serveur ignite

Lancer la commande ignite.



The image displays four sequential screenshots of the Ignite CLI interface, showing the configuration process for a system.

Top Left Screenshot: The main configuration window for `tpcun071`. The `Basic` tab is active. A `Confirmation` dialog box is open, asking: "Settings from a previous installation session were found at startup. Do you wish to retain these settings for the current session?". The `Yes` option is selected.

Top Right Screenshot: The main configuration window for `tpcun071`. The `Basic` tab is active. The configuration shows:

- Configurations: [2016-02-01,15:46 Recover ->] [Description...]
- Environments: [Recovery Archive ->] (HP-UX B.11.11)
- Root Disk: HP_73_4G5T373454LC_0/1/1/0.0.0_70007_MB
- File System: [HP-UX save_config layout ->]
- Root Swap (MB)...: 4096 Physical Memory (RAM) = 4094 MB
- Languages...: English [Keyboards...] [Additional...]

Bottom Left Screenshot: The `itool Confirmation (tpcun071)` window. It displays a table of disks to be destroyed:

Addr	Disk Size(MB)	Description
0/1/1/0.1.0	70007 MB	HP_73_4G5T373454LC
0/1/1/0.0.0	70007 MB	HP_73_4G5T373454LC

Below the table, it states: "The results of the preinstall analysis are:" and includes a note: "NOTE: Free space (1164712KB) in "/var" where /var/adm/crash is located is less than system memory (4192256KB). This should be enough space to capture at least a single dump (and likely more than that if the dump is selective and/or compressed) in the event of a system crash. Additional space may be required to uncompress the dump in order to analyze".

Bottom Right Screenshot: The `Client Status... (2)` window. It shows a list of system IDs and their corresponding actions:

- sig01: Boot the Client/Discover the System
- sig02: Waiting for User to Initiate Install
- sna01: Prepare the Config File
- sna02: Configure the Disks
- tpcun029: Download the mini-system
- tpcun058: Load the software
- tpcun060: Build the Kernel
- tpcun065: Boot From the Client Disk
- tpcun071: Run the SD Configure Scripts
- tpcun072: Run the Postconfigure Scripts
- tpcun084: Load the software
- tpcun086: [View Logfile...]
- uranus: [View Logfile...]

The status bar indicates "of 96 selected" and shows "h warnings" and "errors".



The screenshot shows a terminal window titled "Logfile (3)" with two tabs for "opign001-go.prod.ren.globalone.net". The terminal displays the following text:

```
Logfile for client tpcun071
/var/opt/ignite/clients/0x001321060050/install.log  [ ] Automatic Scrolling

* Processed 70% of archive
* Processed 80% of archive
* Processed 90% of archive
* Completed 100% of archive
* Tue Feb 02 05:38:57 EST 2016: Completed archive load of the sour
(Recovery Archive).
* Executing user specified script:
  */opt/ignite/data/scripts/os_arch_post_1*.
* Running in recovery mode (os_arch_post_1).
* Running the ioinit command ("/sbin/oinit -c")
* Creating device files via the insf command.
insf: Installing special files for sdisk instance 0 address 0/1/1/0,0,0
insf: Installing special files for sdisk instance 1 address 0/1/1/0,1,0
insf: Installing special files for pseudo driver dlp1
```

At the bottom of the terminal window, there are buttons for "[OK]" and "[Help]".

From:
<https://unix-bck.ndlp.info/> - Where there is a shell, there is a way

Permanent link:
https://unix-bck.ndlp.info/doku.php/informatique:nix:hp:hpux_ignite

Last update: 2016/11/24 09:55